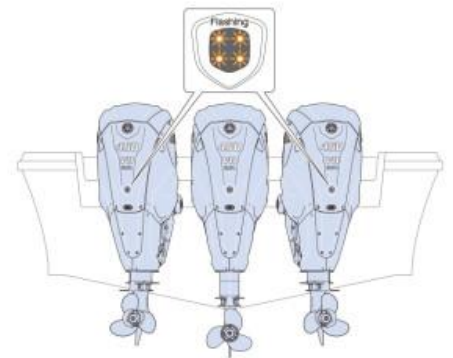
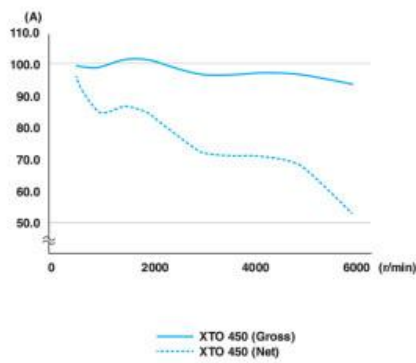
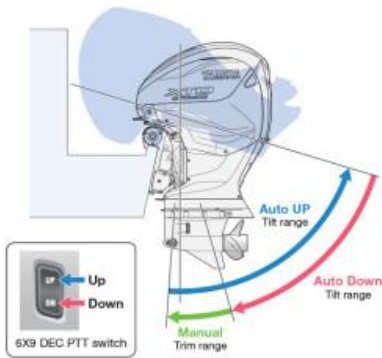




XF450



Specifications

Boat Details

| | | | |
|------------|-------|--------------|----------------------------|
| Price | POA | Boat Brand | Yamaha |
| Model | XF450 | Length | 0.00 |
| Year | 2026 | Category | Boat Engines and Outboards |
| Hull Style | | Hull Type | |
| Power Type | Power | Stock Number | XF450A |

Disclaimer

Our company offers the details of this vessel in good faith but cannot guarantee or warrant the accuracy of this information nor warrant the condition of the vessel. A buyer should instruct his agents and/or surveyors to investigate such details buyer desires validated. This vessel is offered subject to prior sale, price change or withdrawal without notice.

Condition
Suburb

New
ERMINGTON

State
Engine Make

New South Wales

Disclaimer

Our company offers the details of this vessel in good faith but cannot guarantee or warrant the accuracy of this information nor warrant the condition of the vessel. A buyer should instruct his agents and/or surveyors to investigate such details buyer desires validated. This vessel is offered subject to prior sale, price change or withdrawal without notice.

Description

Yamaha has taken the next step forward in premium outboard power, with the introduction of the XTO Offshore 450.

Featuring the same 5.6L big block displacement and long list of features as our original XTO 425, this awesome engine improves the outboard that took the world by storm.

The XTO Offshore 450 now comes with a Phase Angle Control Charging System, which features three-phase, simultaneous charging that produces more net amps at a low RPM - ideal for running high demand devices like gyro stabilisers, air conditioning, sounds systems and more.

For extra convenience, this engine is equipped with Yamaha's exclusive TotalTilt™ with tilt limiter, resulting in faster and easier engine tilting with a simple double push of the tilt up or down button.

The cowling has also received an upgrade with raised chrome graphics and restyled panels, adding to the XTO's premium look while embodying the extreme power of this massive outboard.

With the huge success of Yamaha's industry leading Helm Master™ EX Autopilot and Joystick system, the XTO 450 Offshore now offers the option of a built-in Propeller light. Installed directly into the engine apron, this cool looking safety feature indicates when one of the Helm Master™ EX SetPoint modes is active, providing a warning to anyone approaching from the rear of the vessel.

Yamaha has also released two additional XTO prop options. A new XTO EC® prop has been designed to reduce ventilation which can occur when pushing big heavy boats, due to the extreme thrust produced by this engine. For lighter vessels, a new 27-inch pitch prop is also available, providing increased RPM at wide-open throttle for potentially more top-end speed.

With all these improvements, the XTO 450 Offshore offers more power, more technology and more convenience than any other engine in Yamaha's big horsepower line-up.

Technical Specification

HeightX: 640 [25.1] | U: 767 [30.1]

WeightX: 447 | U: 458

Engine4-Stroke, 32 Valve DOHC Direct V8

Displacement5559.0

Bore96 x 96

Max RPM5000-6000

LubricationWet-sump

FuelEFI

IgnitionTCI

StarterElectric

Alternator102 (Net 96) Amp High Output Alternator

OperationSteer By Wire

TiltTotalTilt with Tilt Limiter

GaugesOptional

Disclaimer

Our company offers the details of this vessel in good faith but cannot guarantee or warrant the accuracy of this information nor warrant the condition of the vessel. A buyer should instruct his agents and/or surveyors to investigate such details buyer desires validated. This vessel is offered subject to prior sale, price change or withdrawal without notice.

Network Gauges Optional
Gear Ratio 1.79 (25/14)
Steering Integrated, Electric Actuation

Engine Details

Horse Power 450

Disclaimer

Our company offers the details of this vessel in good faith but cannot guarantee or warrant the accuracy of this information nor warrant the condition of the vessel. A buyer should instruct his agents and/or surveyors to investigate such details buyer desires validated. This vessel is offered subject to prior sale, price change or withdrawal without notice.